

ScrewPlant™ Implant from Implant Direct

All-in-one packaging with one-stage and two-stage healing options and fixture-mount that can be shortened to create final abutment

Features and benefits include : Internal Connection with 2mm long hex and external bevel • Tapered body allows insertion using Tapered Screw-Vent drills • Surface options: SBM or HA-coated • Double-lead threads for 2 x faster insertion & quadruple-lead threads near top for crestal bone preservation • Color-coded fixture-mount (platform specific) usable as a transfer and shortened for use as a straight abutment • 2-mm extender retained by cover screw for use as a healing collar or for one-stage surgery • Snap-on comfort cap for one-stage surgery, use as a healing collar or for fabrication of temporary restoration



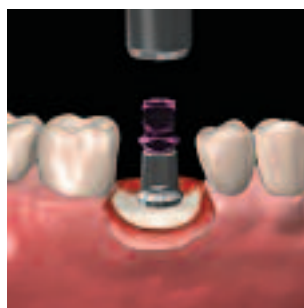
1 Prepare surgical site.



2 Carry implant using fixture-mount drill.



3 Thread-in implant using drill or ratchet.



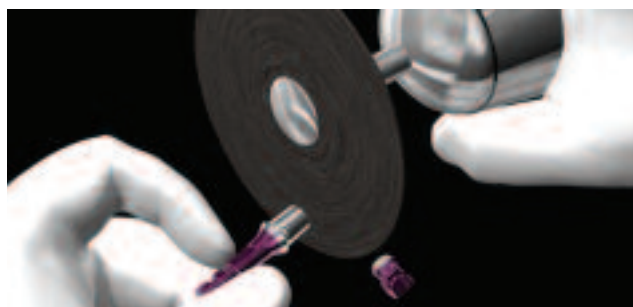
4 Seat implant with blasted surface flush with crest.



5 Remove Fixture-Mount from Implant—1.25mmD Hex Tool.



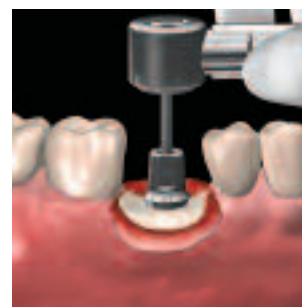
6 Attach to implant analog that matches fixture mount color.



7 Shorten fixture mount to produce straight abutment.



8 Seat abutment from modified fixture mount.



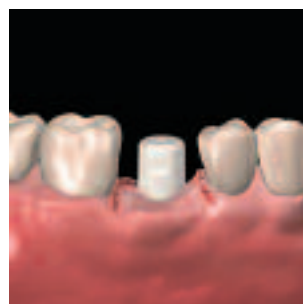
9 Tighten abutment screw using 30 Ncm of torque.



10 Position comfort cap over abutment with flats aligned.



11 Press comfort cap for snap-on retention.



12 Suture around comfort cap for 1-Stage Surgery.

Implant Direct LLC
www.implantdirect.com
 818-444-3333